



The Durban Metropolitan Open Space System in eThekweni Municipality (City of Durban)

Sabelo B Nkosi

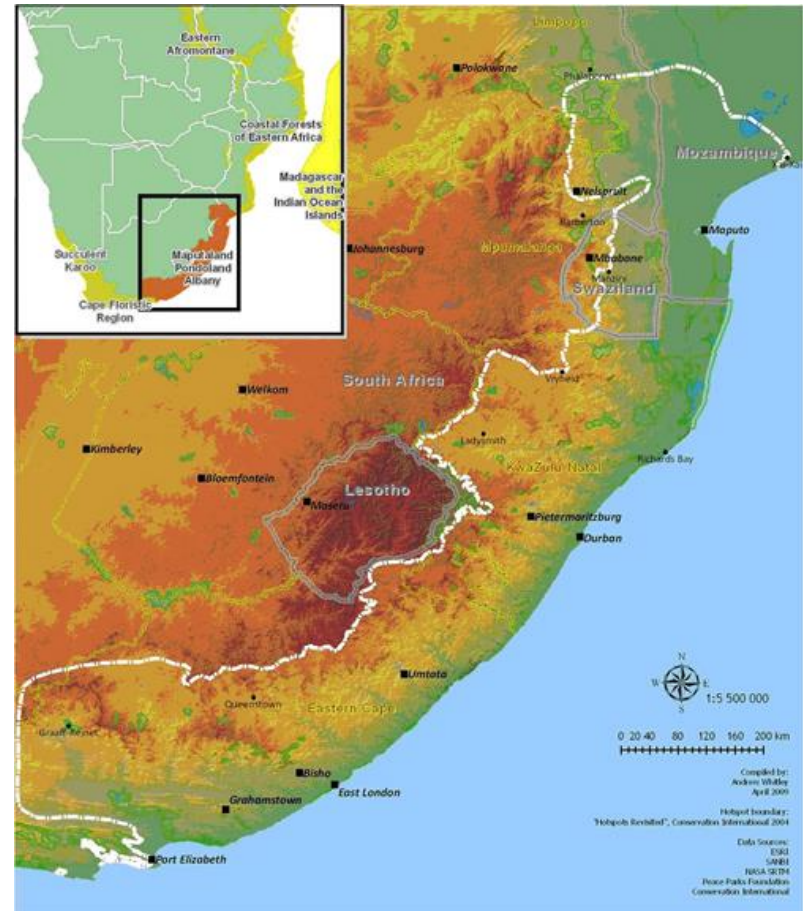
USE_DCS23 - Metropolis

0. | OUTLINE

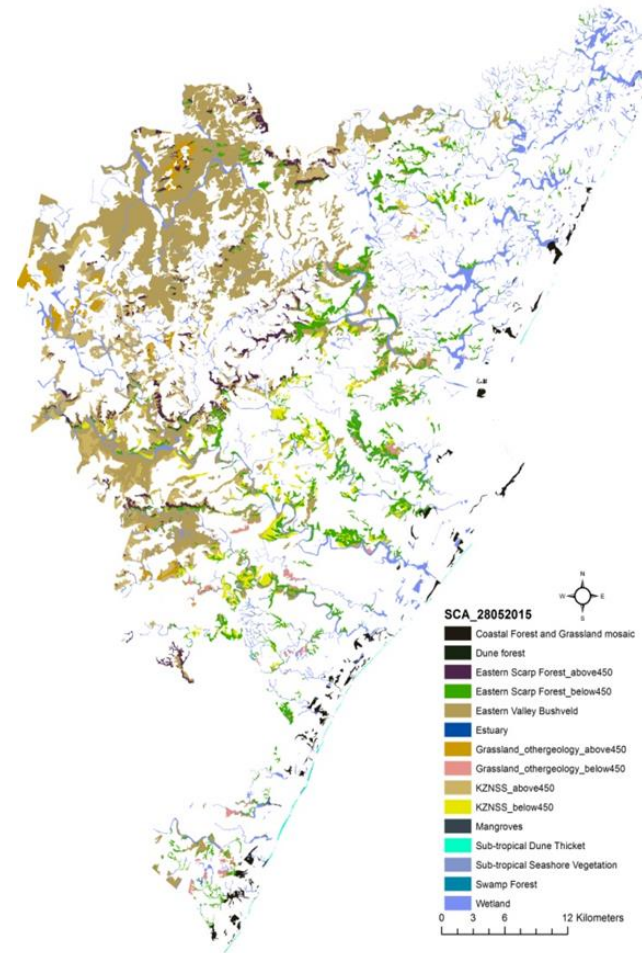
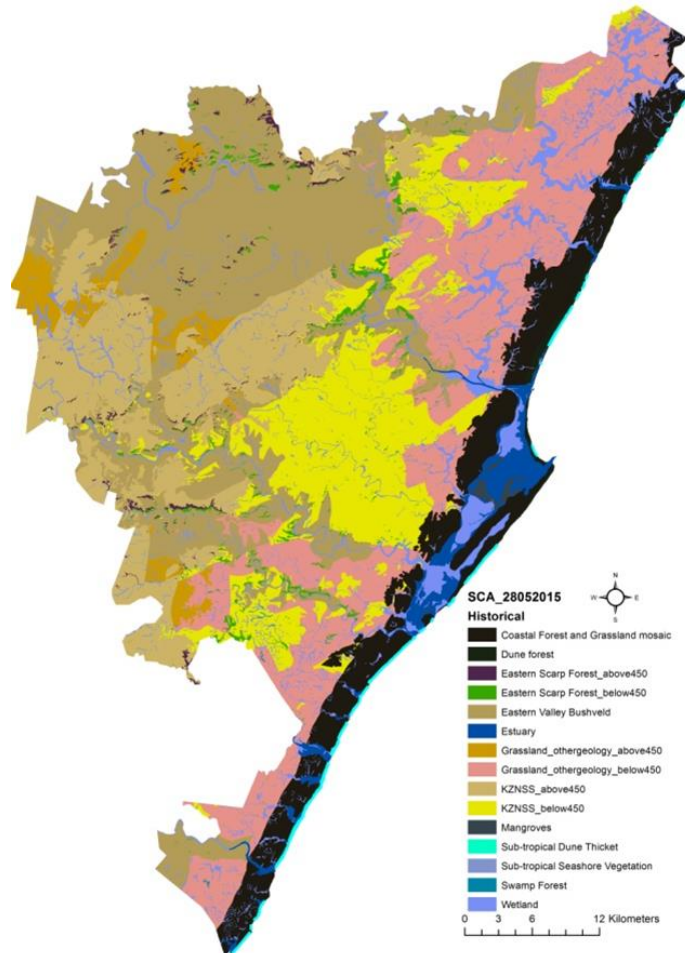
- Durban's biodiversity context
- The biodiversity challenge
- The D'MOSS
- Mainstreaming into municipal planning and decision support
- Biodiversity implementation tools
- Concluding remarks

1. | DURBAN'S BIODIVERSITY CONTEXT

- EThekweni Municipal Area (EMA) of 2297 km² with a population of 3.5 million
- **Durban is located in the middle of the Maputaland-Pondoland-Albany hotspot**
- Three of the countries eight terrestrial biomes, eight broad vegetation types and over 2000 plant species
- 97 kilometres of coastline
- 18 river catchments with over 4000 kms of river
- 16 estuaries (approx. ¼ of KwaZulu-Natal's estuaries)
- 95000 ha of open space



2. | BIODIVERSITY CHALLENGE



BY 2030 ETHEKWINI WILL BE AFRICA'S MOST CARING AND LIVEABLE CITY

3. | D'MOSS

- **Use SCA to identify key terrestrial, freshwater, and marine ecosystems**
- Produce D'MOSS, a series of interconnected open spaces
- Identify environmentally sensitive and conservation worthy areas
- **For protection and management**
- Municipal obligations to relevant law and policy
- Contribution to sustainable development and human well being
- Climate change adaptation

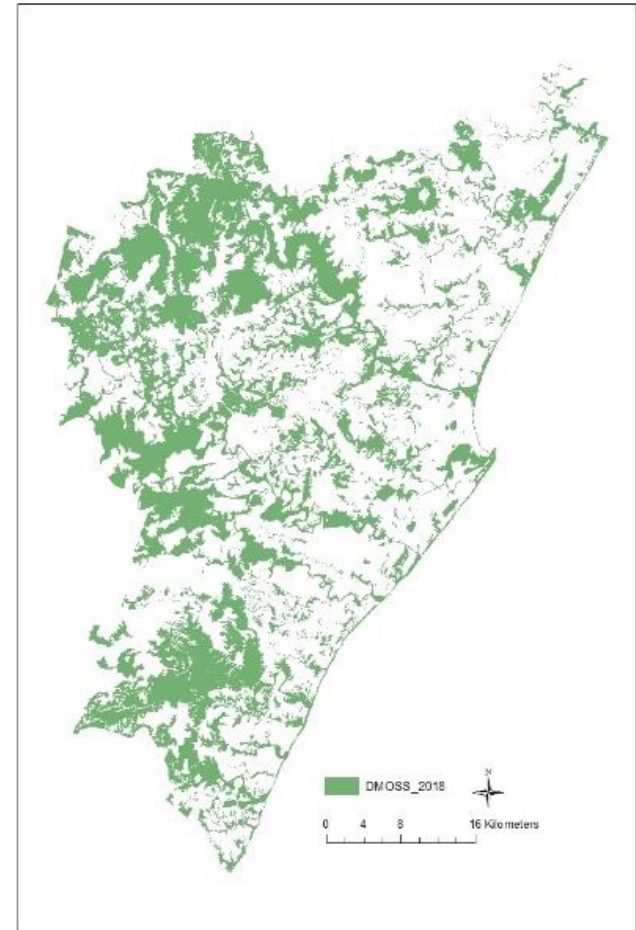
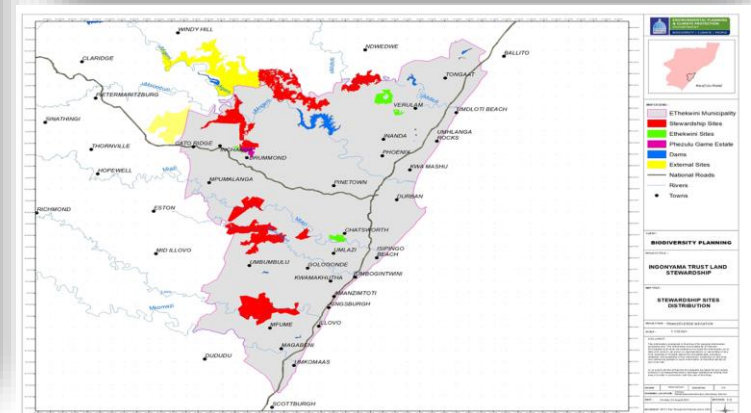
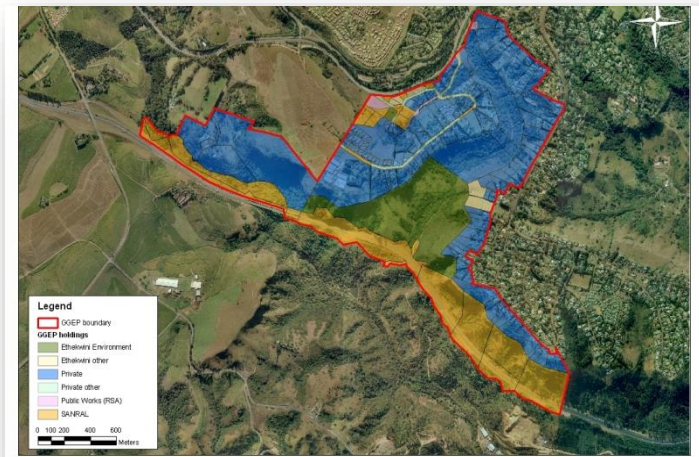


Figure 1: The approved 2018 D'MOSS

5. | Implementation tools



6. | CONCLUDING REMARKS

- Champions
- Understand the biodiversity context
- Decide on an appropriate tool
 - SCA to create D'MOSS
 - Planning function
- D'MOSS guides land use and environmental decisions
- D'MOSS guides prioritization of areas and implementation



Thank you!

Contact details:

Mr. Sabelo B Nkosi (*Pr.Sci.Nat.* and Registered EAP)

Acting Senior Manager: Biodiversity Planning

Biodiversity Management Department, eThekweni Municipality

e-mail: Sabelo.Nkosi@durban.gov.za

Tel: +27(031) 322 4301

Fax: +27(031) 311 7134

http://www.durban.gov.za/City_Services/development_planning_management/environmental_planning_climate_protection/Pages/default.aspx